

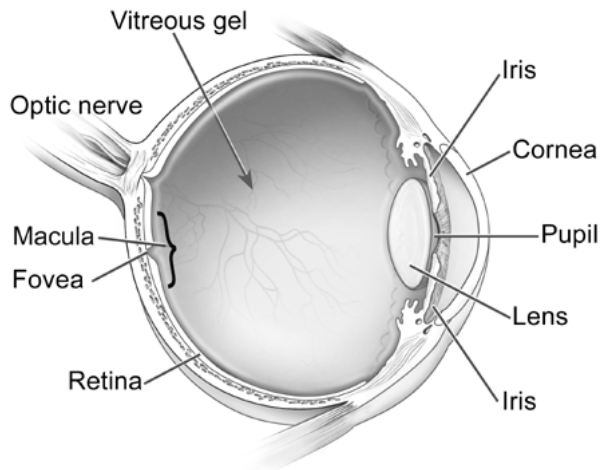
Home (/) > Eye Health Information (/health) > Healthy Eyes Facts

Healthy Eyes Facts

How do your eyes work?

There are many different parts of the eye that help to create vision. We “see” with our brains; our eyes collect visual information and begin this complex process.

- Light passes through the cornea, the clear, dome-shaped surface that covers the front of the eye. The cornea bends - or refracts - this incoming light.
- The iris, the colored part of the eye, regulates the size of the pupil, the opening that controls the amount of light that enters the eye.
- Behind the pupil is the lens, a clear part of the eye that further focuses light, or an image, onto the retina.
- The retina is a thin, delicate, photosensitive tissue that contains the special “photoreceptor” cells that convert light into electrical signals.
- These electrical signals are processed further, and then travel from the retina of the eye to the brain through the optic nerve, a bundle of about one million nerve fibers.



Eye diagram showing the macula and fovea (black and white). NEI Catalog number NEA09.

How can you keep your eyes healthy?

Incorporate your eye health as part of your regular health check-ups. Having a comprehensive dilated eye exam is one of the best things you can do to make sure that you're seeing the best you can and that you're keeping your eyes healthy.

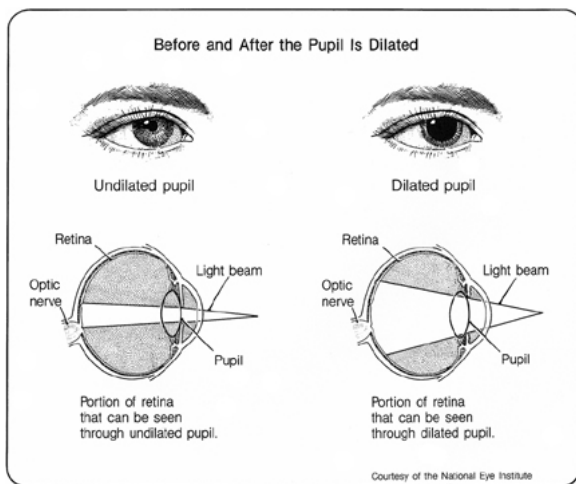
Millions of people have problems with their vision every year. Some of these problems can cause permanent vision loss and even blindness, while others are common problems that can be easily corrected with glasses or contact lenses.

What is a comprehensive dilated eye exam?

A comprehensive dilated eye exam is a painless procedure in which an eye care professional examines your eyes to look for common vision problems and eye diseases, many of which have no early warning signs. Regular comprehensive eye exams can help you protect your sight and make sure that you are seeing your best.

NEI: Dilated Eye Exam

National Eye Institute doctor discusses the importance of having a dilated eye exam (/youtube/eye_exam).



NEI Recommendations

- [Simple Tips for Healthy Eyes \(/healthyeyes/eyehealthtips\)](#) PDF*

Tips for Keeping the Eyes Healthy

- **Have a comprehensive dilated eye exam.** A dilated eye exam is the only way to detect many common eye diseases such as glaucoma, diabetic eye disease and age-related macular degeneration in their early stages.
- **Know your family's eye health history.** It's important to know if anyone has been diagnosed with a disease or condition since many are hereditary. This will help to determine if you are at higher risk for developing an eye disease or condition.
- **Eat right to protect your sight.** Eating a diet rich in fruits and vegetables, particularly dark leafy greens such as spinach, kale, or collard greens is important for keeping your eyes healthy, too. Research has also shown there are eye health benefits from eating fish high in omega-3 fatty acids, such as salmon, tuna, and halibut.
- **Maintain a healthy weight.** Being overweight or obese increases your risk of developing diabetes and other systemic conditions, which can lead to vision loss, such as diabetic eye disease or glaucoma. If you are having trouble maintaining a healthy weight, talk to your doctor.
- **Wear protective eyewear.** Protective eyewear includes safety glasses and goggles, safety shields, and eye guards specially designed to provide the correct protection for a certain activity.
- **Quit smoking or never start.** Smoking is as bad for your eyes as it is for the rest of your body. Research has linked smoking to an increased risk of developing age-related macular degeneration, cataract, and optic nerve damage, all of which can lead to blindness.
- **Be cool and wear your shades.** Sunglasses are a great fashion accessory, but their most important job is to protect your eyes from the sun's ultraviolet rays. When purchasing sunglasses, look for ones that block out 99 to 100 percent of both UV-A and UV-B radiation.
- **Give your eyes a rest.** If you spend a lot of time at the computer or focusing on any one thing, you sometimes forget to blink and your eyes can get fatigued. Try the 20-20-20 rule: Every 20 minutes, look away about 20 feet in front of you for 20 seconds. This can help reduce eyestrain.
- **Clean your hands and your contact lenses—properly.** To avoid the risk of infection, always wash your hands thoroughly before putting in or taking out your contact lenses. Make sure to disinfect contact lenses as instructed and replace them as appropriate.
- **Practice workplace eye safety.** Employers are required to provide a safe work environment. When protective eyewear is required as a part of your job, make a habit of wearing the appropriate type at all times and encourage your coworkers to do the same.

Common Vision Problems

The most common vision problems are refractive errors ([/health/errors/errors](#)), more commonly known as

- Myopia or Nearsightedness ([/health/errors/myopia](#)),
- Hyperopia or Farsightedness ([/health/errors/hyperopia](#)),
- Astigmatism and ([/health/errors/astigmatism](#))
- Presbyopia ([/health/errors/presbyopia](#))

Know Your Risk Factors...

([/health/maculardegen](#))

Age-Related Macular Degeneration ([/health/maculardegen](#))

([/health/maculardegen](#))

Age-related macular degeneration ([/health/maculardegen](#)) usually occurs in people who are age 50 and older. As people get older, the risk increases. Other risk factors include the following:

- Smoking. Research shows that smoking increases the risk of AMD two-fold.

- Race. Caucasians are much more likely to get AMD than people of African descent.
- Family history. People with a family history of AMD are at higher risk.

(/health/cataract/)

Cataract (/health/cataract/)

(/health/cataract/)

The risk of cataract (/health/cataract/) increases as you get older. Other risk factors for cataract include:

- Certain diseases such as diabetes
- Personal behavior such as smoking and alcohol use
- The environment such as prolonged exposure to sunlight

(/health/diabetic/)

Diabetic Retinopathy (/health/diabetic/)

(/health/diabetic/)

- All people with diabetes—both type 1 and type 2—are at risk
- During pregnancy, diabetic retinopathy (/health/diabetic/) may be a problem for women with diabetes
- The longer a person has diabetes, the greater his/her chance of developing diabetic retinopathy

(/health/glaucoma/)

Glaucoma (/health/glaucoma/)

(/health/glaucoma/)

Anyone can develop glaucoma (/health/glaucoma/). Some people, listed below, are at higher risk than others:

- African Americans over age 40
- Everyone over age 60, especially Mexican Americans
- People with a family history of glaucoma

Protecting Your Eyes

A simple way to protect your eyes is to use protective eyewear, at work or play.

- Eye Safety At Work Is Everyone's Business (/sites/default/files/health-pdfs/HVMPPreventingInjuries_Tagged.pdf) PDF*
- Sports and Eye Care (/sports/)
- Eye Safety for Kids (<http://isee.nei.nih.gov/safety>)

YouTube Videos

Watch NEI videos on getting a Comprehensive Dilated Eye Exam, Common Vision Problems, Age-Related Macular Degeneration (AMD), Cataract, Diabetic Eye Disease, Dry Eye and Glaucoma. (/youtube/)

The National Eye Institute (NEI) is part of the National Institutes of Health (NIH) and is the Federal government's lead agency for vision research that leads to sight-saving treatments and plays a key role in reducing visual impairment and blindness.



NEI on Twitter (<https://twitter.com/NatEyeInstitute>)



NEI on YouTube (<https://www.youtube.com/user/neinih>)



NEI on Flickr (<https://www.flickr.com/photos/nationaleyeyeinstitute/>)



NEI on Pinterest (<http://www.pinterest.com/neinih/>)




NEI on LinkedIn (<https://www.linkedin.com/company/national-eye-institute-nei>)




NEI RSS (/news/rss)




NEHEP on Twitter (<https://twitter.com/NEHEP>)

 NEHEP on Facebook (<https://www.facebook.com/NationalEyeHealthEducationProgram>)

 NEHEP on Flickr (<https://www.flickr.com/photos/nehep/>)

 NEHEP Newsletter (</nehep/newsletter/subscribe>)

 E-mail updates (<https://list.nih.gov/cgi-bin/wa.exe?SUBED1=insidenei&A=1>)

 AGI updates (<https://list.nih.gov/cgi-bin/wa.exe?A0=nei-agi>)

[NEI Home \(/\)](#) | [Contact Us \(/tools/contactus\)](/tools/contactus) | [A-Z Site Map \(/tools/sitemap\)](/tools/sitemap) | [Information in Spanish \(Información en español\) \(/health/espanol\)](/health/espanol) |
[Website, Social Media Policies and Other Important Links \(/tools/policies\)](#) | [NEI Employee Emergency Information \(/tools/emergency\)](/tools/emergency) |
[NEI Intranet \(http://neinet.nei.nih.gov/\)](http://neinet.nei.nih.gov/) (Employees Only) |

*PDF files require the free Adobe® Reader® (<http://www.adobe.com/products/acrobat/readstep2.html>) software for viewing.

We welcome your questions and comments. Please send general questions and comments to the NEI Office of Science Communications, Public Liaison, and Education. Technical questions about this website can be addressed to the NEI Website Manager (<mailto:kcl@nei.nih.gov>).

Department of Health and Human Services (<http://www.hhs.gov>) | The National Institutes of Health (<http://www.nih.gov>) | USA.gov (<http://www.usa.gov>)

NIH...Turning Discovery Into Health ®